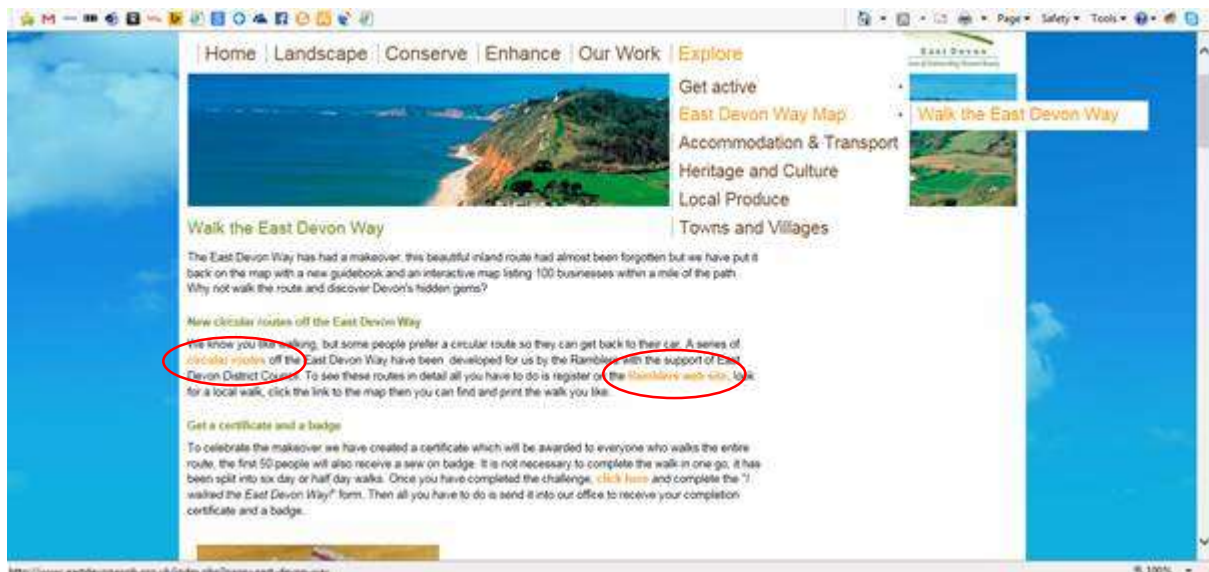


Noddy guide to accessing the East Devon Way circular walks on the Ramblers web site.

Firstly find the East Devon Way page (see below)



On this page is the link to the simple PDF document and there is also the Ramblers web site link. The links within the Ramblers web site are not immediately obvious so we have outlined a simple guide below to help you

Click the link on the page (above) to the Ramblers web site and follow the instructions below. **Please note details at the end of this note about registering/not registering on the Ramblers web site.** In a nut shell, you **will not** get full details of the walks to print off **unless** you register **OR** join The Ramblers

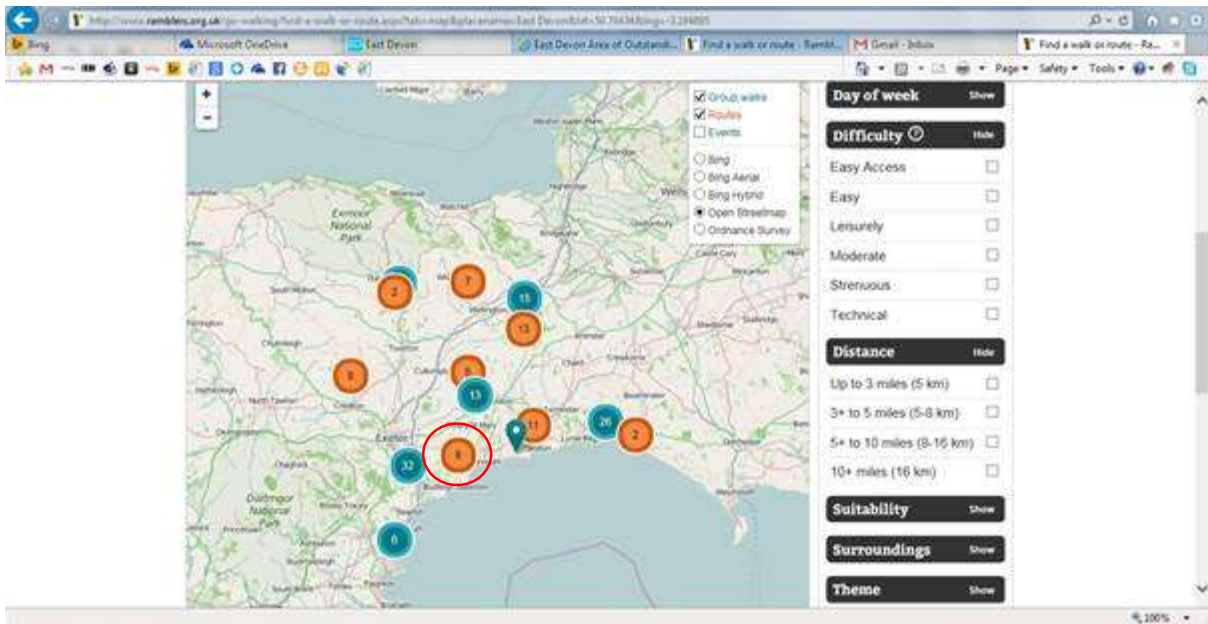
So... now you are on the Ramblers web site... here is what to do

1. Put a post code into the search box at the top left hand side (EX10 8HL or somewhere near will help) and enter



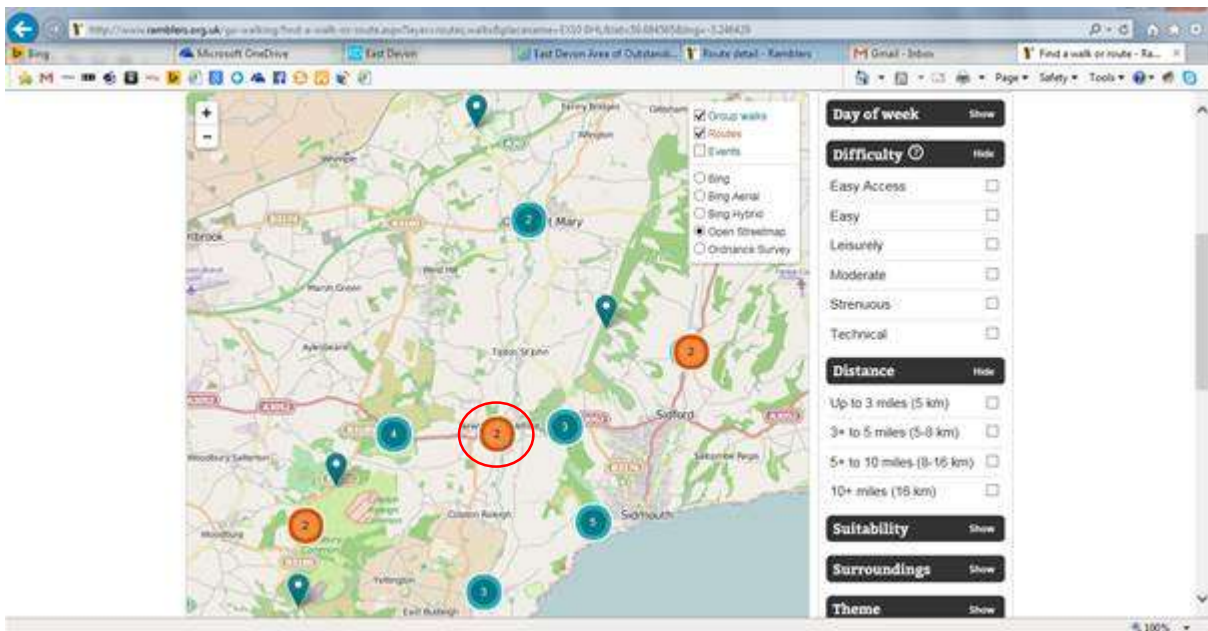
Noddy guide to accessing the East Devon Way circular walks on the Ramblers web site.

This page will come up



2. Click on one of the circles (We clicked orange 6 near Sidmouth)

Which leads to this page



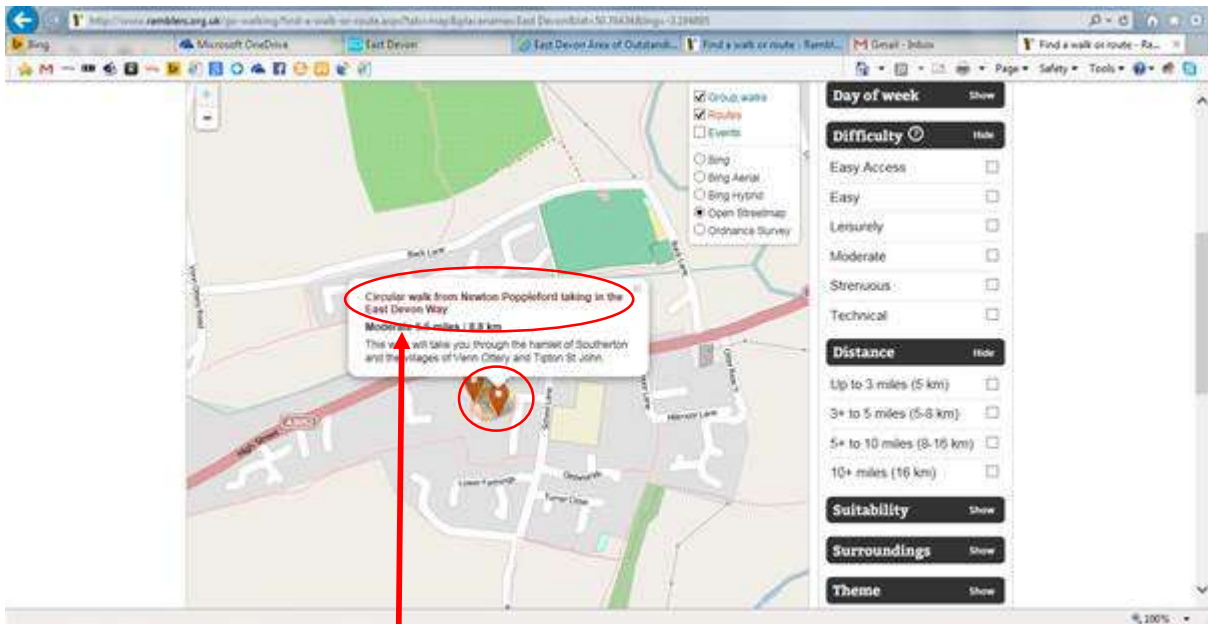
3. Click another circle (We clicked on orange 2 near Newton Poppleford)

4. Once here click the circle again

Continued on next page

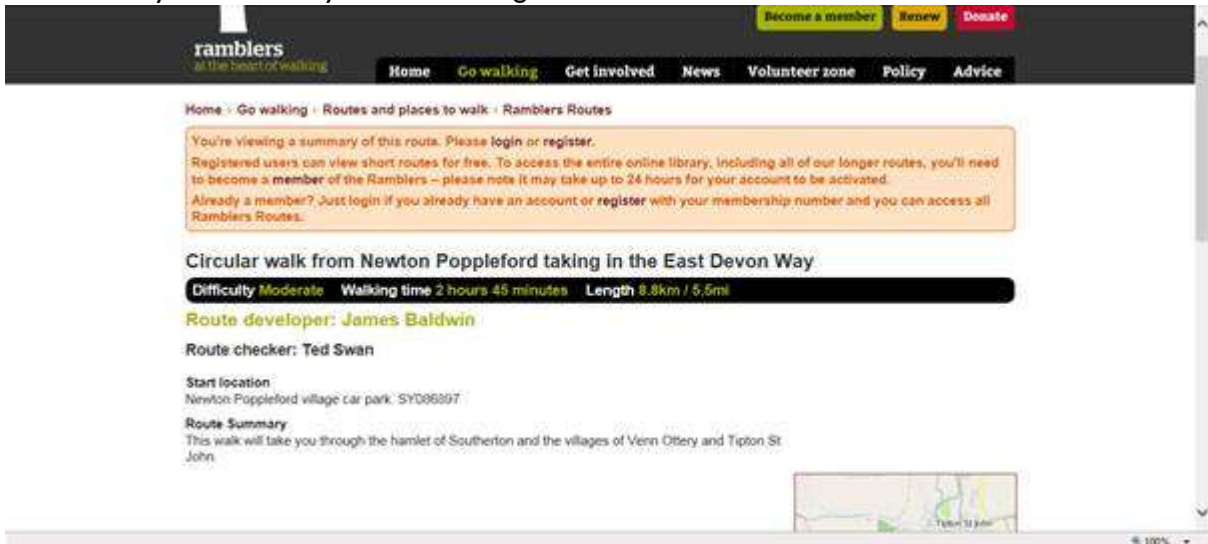
Noddy guide to accessing the East Devon Way circular walks on the Ramblers web site.

5. Then click a marker in that circle (see below)



6. Hover over the walk title line and click on this – if you **have** registered you will see the walk details and be able to download/print – if you have **NOT** registered you will only see a summary

This is what you will see if you have not registered on the Ramblers web site

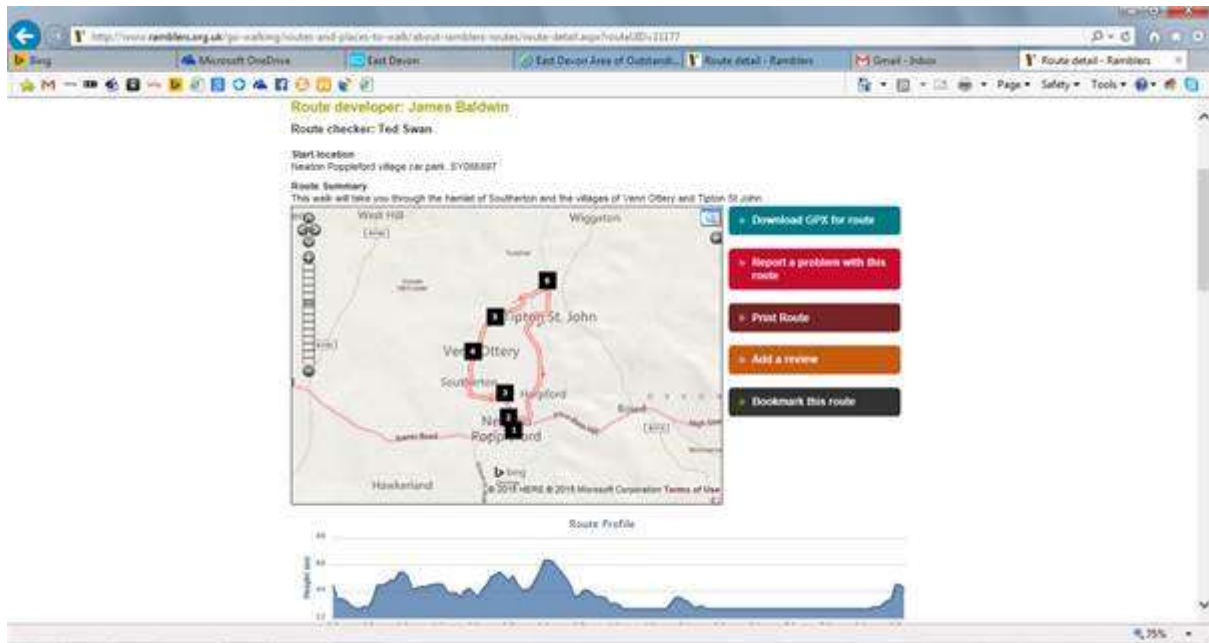


Continued on next page

Noddy guide to accessing the East Devon Way circular walks on the Ramblers web site.

This is what you will see if you HAVE registered on the Ramblers web site and you can download/print the route and make comments etc

NOTE: By clicking on the + sign at the top right of the map screen, you can get an OS base map of the route instead of the diagrammatic Bing map, and then you can also enlarge the OS map to get to a 1:25,000 scale



Click the back button as required to find more walks.

We hope this is helpful.

East Devon AONB Team